



Justin Doty

Graphic, Illustration and Web Designer



www.littleatombomb.com



502-715-0075

Skills

Adobe Suite -Illustrator - Photoshop - Indesign -
Animate - Premiere - After Effects - Audition
Zbrush - Dreamweaver - Cinema 4d - Wordpress -
Elementor
Microsoft Word - Excel - Powerpoint - Outlook
HTML - CSS - Javascript

Education

Bachelor's of Graphic Design - 2020
Sullivan University Louisville, KY

Associate of Graphic Design - 2018
Sullivan University Louisville, KY

Associate of Fine Art 2007
Sante Fe Community College – Gainesville, FL

Accomplishments

I have been given the Kentucky State Active
Duty Ribbon, Army Reserve Component Achieve-
ment Medal, Kentucky Service Ribbon, Army
Reserve Overseas Training Ribbon, and the Army
Achievement Medal (2x).

Sales Consultant

July 2023 - Present

Cellular Sales

Create profitability for the company by offering connectivity solutions in the form of cellular and home internet services. Provide assistance to customers pertaining to their communication needs and fostering an environment of trust and support.

Sales Manager

November 2020 – June 2021

Aaron's – Gainesville, FL

Responsible for customer service, inventory ordering, maintenance, deliveries, and furniture assembly. Maintaining the front and back of the business including organization, cleanliness, pricing, layout, scheduling team member guidance and best practices.

Supervising Driver

April 2020 – September 2020

Two Men and a Truck – Louisville, KY

Responsible for excellent service in moving personal belongings to new homes. Driver acts as leadership on the ground for small teams of movers. Maintenance and safe operation of the fleet. Day to day customer interactions, and payments. Items are loaded and moved safely to the new destination.

Wireless Kiosk Manager

July 2018 to April 2020

Wireless Advocates – Louisville, KY

Provide service for Costco customers in the form of Cellular Services. Assistance with Activations and upgrades for AT&T, Verizon, T-Mobile, and Sprint. Resolution of issues for customers, including bill analysis and troubleshooting. Responsible for daily operations, scheduling for the store and administrative duties related to the store.

Retail Sales Consultant

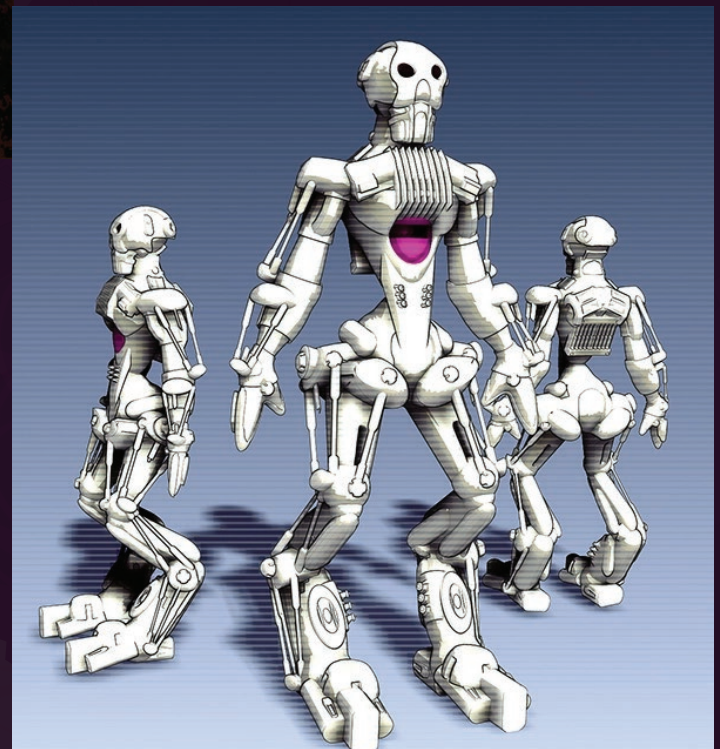
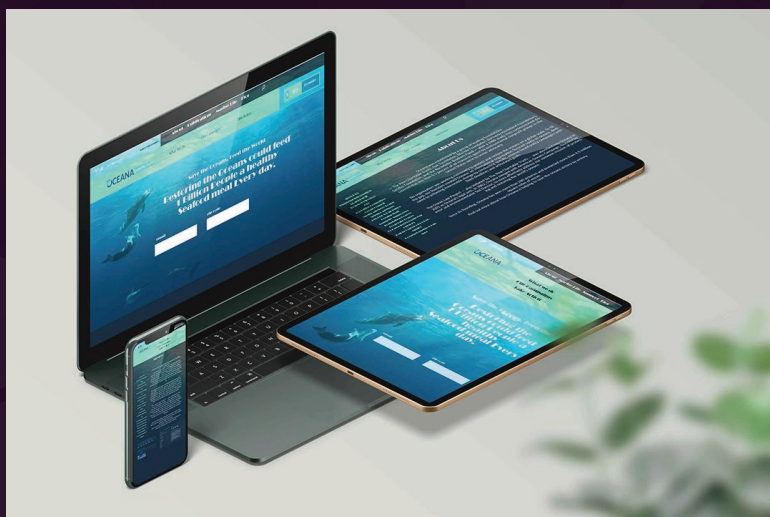
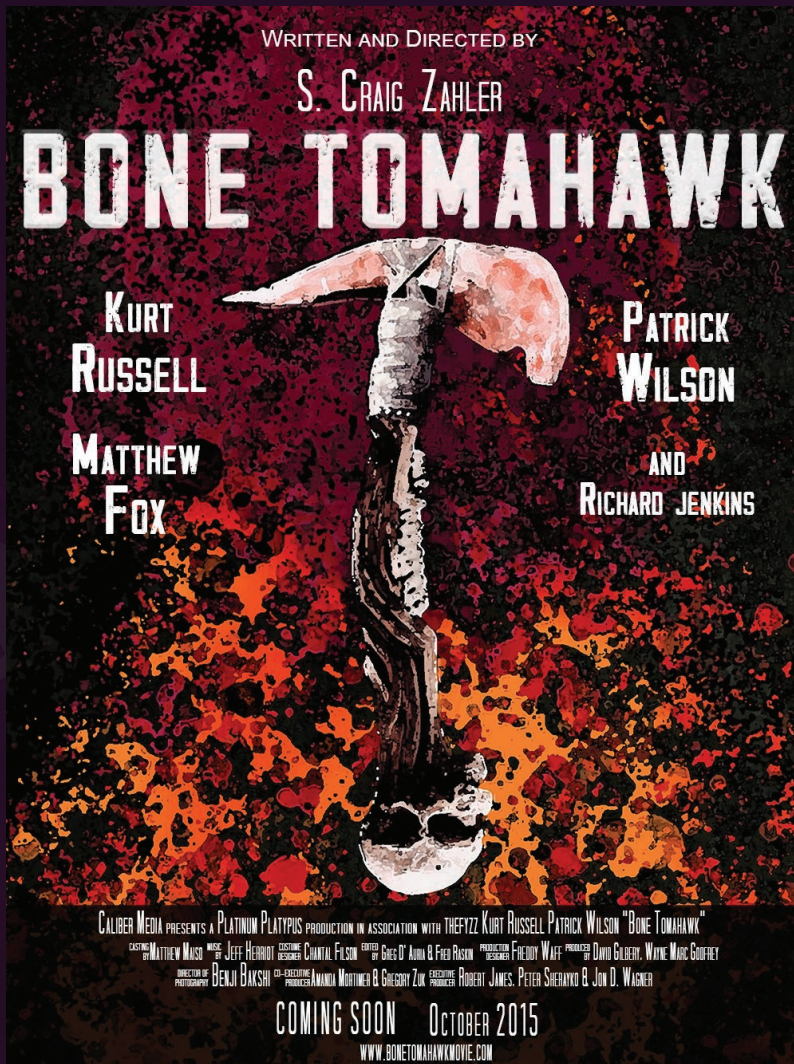
February 2016 to May 2018

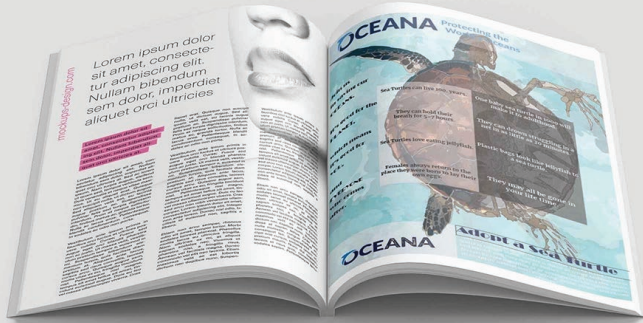
AT&T Corporate – Louisville, KY

Generating business for AT&T through the sales of Cellular Service and Equipment, DirecTV, DirecTV Now, U-verse Television, Internet and Home Telephone service. Resolving technical issues for customers relating to both Android and iOS operating systems. Maintaining a positive environment, in which, customer's needs are met in a timely, considerate and sincere manner.

Portfolio

please visit my website to see more.





AWESOME SCI-FI HOLLYWOOD RIDES

LIGHTCYCLE



When designer Sid Head was dreaming up *Tron's* light cycles 20 years ago, he imagined an open canopy motorcycle for the movie. "But they just could not render it in the computers with an actor sitting on a bike," he says. "So at the last minute, they had to come up with an enclosed canopy, which became the iconic original light cycle."

Self-titled CHRISTINE

15% of the film's budget was dedicated to the Plymouth Fury herself, making them the best paid actor in the production. By movie's end, only three pristine Christines remained; first going on the road to promote the movie, and later sold to collectors.



GIGAHORSE

Mad Max: Fury Road

Imortan Joe's car, if it can be called that, the "Gigahorse" is fully functional, and was designed and constructed entirely from scratch for the film. The design of the car was inspired by the "Gigahorse" from the 1950s film *The Bad News Bears*. The Gigahorse was adorned with dual supercharged Chevrolet 140 V8 engines linked together by a custom gearbox feeding into an Allison transmission.



MOTO-TERMINATOR

Though not a secret, but neither well known, the moto-terminators were actually Ducati Hyperpadas: even though the film utilized a great deal of CGI for the motorcycle, scenes a small number of fully-functional, rideable bikes were built.



HELLCYCLE

Ghost Rider



In the first *Ghost Rider* movie, Cage rode a Buell motorcycle for Johnny Blaze's stunt cycle, and a heavily customized Harley-Davidson dubbed "Herc" which transforms into the "Hell Cycle". For the second film a Yamaha Vmax has taken the reins to become the rider's fiery new steed.

Back to the Future DELOREAN

The DeLorean was deliberately selected for its general appearance and gull wing doors. In order to make it plausible to people in 1985 that it might be some kind of alien spacecraft. Because of the film's overwhelming popularity body kits were made for DeLoreans to make the look like the time machine of the film.



SPINNER

Blade Runner



In the 1949 novel (which was later renamed "Blade Runner"), the author refers to the cars used by law enforcement as hover cars. But with the creative vision of Syd Mead for the original movie, these hover cars really took flight. The vision then became a reality when Gene Winfield built what came to be a full size Spinner - based on a Volkswagen - only two of which were made.

CREED LAWMASTER

The original bike was a Suzuki GSX 750 with the chassis extended and custom fairings added, as well as being fitted with the largest tires that would allow the motorcycle to remain drivable. The look of the Lawmaster from the credits could not be replicated exactly, as that would make the bike inoperable.



BATPOD

The Dark Knight



The Batpod is The Dark Knight's version of the Batcycle. It is in fact a working motorcycle though, admittedly, difficult to drive. Driver's stored more with their shoulders than hands, and the engine's are actually mounted inside the wheels instead of the frame as you see in typical bikes.

Ghostbusters ECTO-1

The Ecto-1 suffered catastrophic failure on the Brooklyn Bridge while shooting *Ghostbusters II*. Scenes from the film that show the car backing up and moving were real; the car died there during a sequence on the Brooklyn Bridge, which caused such a huge traffic jam, the NYPD heavily fined the production. A second Miller-Meteor was quickly converted for the remainder of filming, referred to as Ecto-1A.

